

Three-Tiered Equipment Maintenance Plan Development Process

- **Benefits**
 - **Quick Returns**
 - Based on Criticality Index
 - **Instant PdM Program Design**
 - **Balanced PM/PdM Approach**
 - **Accelerated EMP Development**
 - ***Best Practices Approach***



Three-Tiered EMP Development Process, cont'd

Equipment Type Versus Technology Application(s)	MECHANICAL			ELECTRICAL			STATIONARY					
	Vibration	Ultrasonic	Infrared	Oil Analysis	MCA Online	MCA Offline	Infrared	Ultrasonic	Visual Inspection	Ultrasonic Thickness	Dye Penetrant Testing	Eddy Current
Chiller	x	x	x	x	x	x	x	x	x			x
Centrifugal Pump	x	x	x	x	x	x	x	x	x	x	x	
Air Compressor	x	x	x	x	x	x	x	x	x	x		
Tank			x						x	x		
Evaporator			x				x		x			

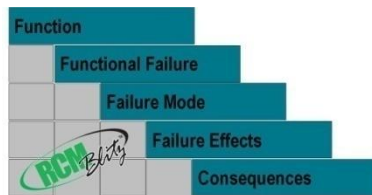
Asset Health Matrix™



Standardized EMP

90%

Design Failure Modes



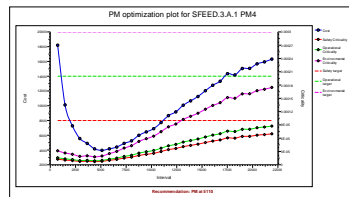
RCM Blitz™



Customized EMP

20%

Context Failure Modes



Isograph™



Optimized EMP 10%

Optimum Task Intervals

PM Evaluation - Categorize PM Recommendations

PM Task Action Recommendation	# of Tasks	% of Tasks	Man-Hours Represented
Non-Value Added (Delete)	1,640	8.2%	6,661
Reassign to Operator Care	1,380	6.9%	5,605
Reassign to Lube Route	2,856	14.3%	11,600
Replace with PdM	6,437	32.2%	28,222
Reengineer	5,200	26.0%	26,221
No Modifications Required	2,487	12.4%	8,987
Totals	20,000	100.0%	87,296

Asset Health Assurance Model

